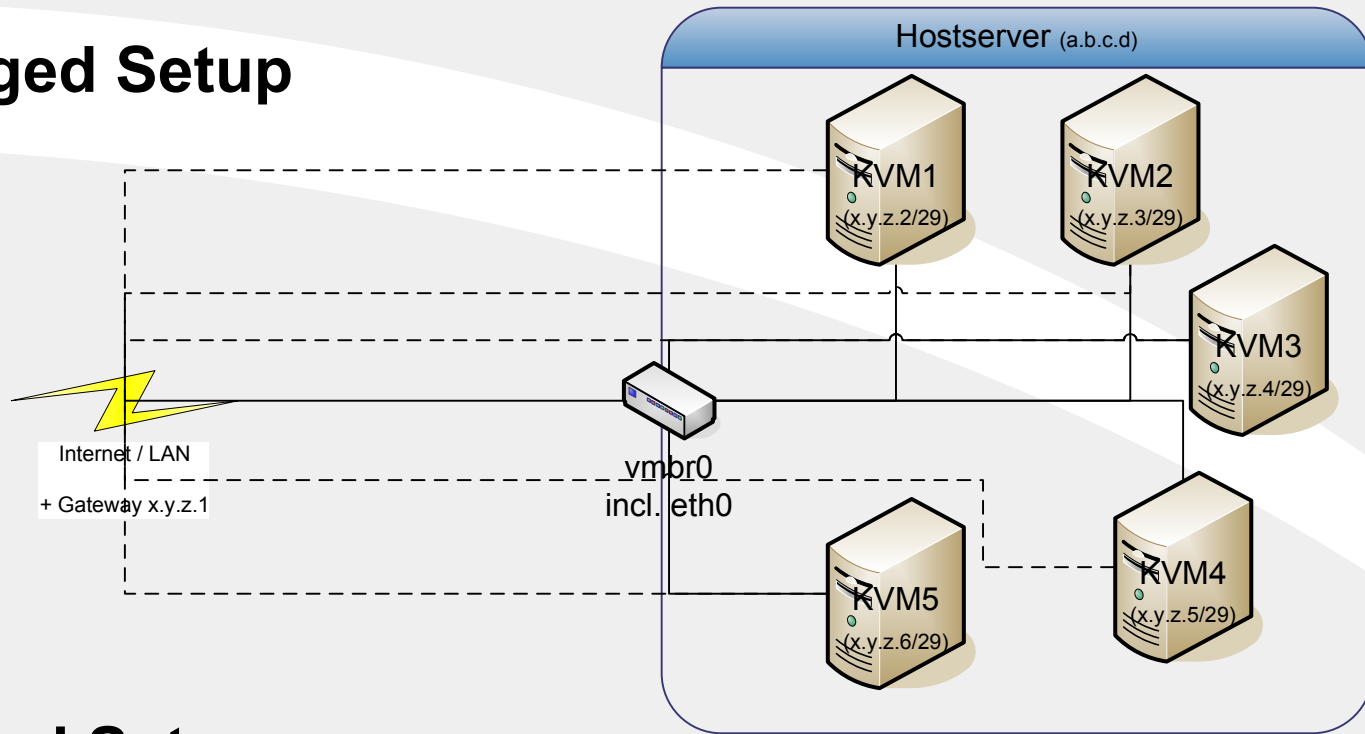


Bridged Setup



Direct access to internet/LAN via own MAC address

Trace Route to Server would look like this:

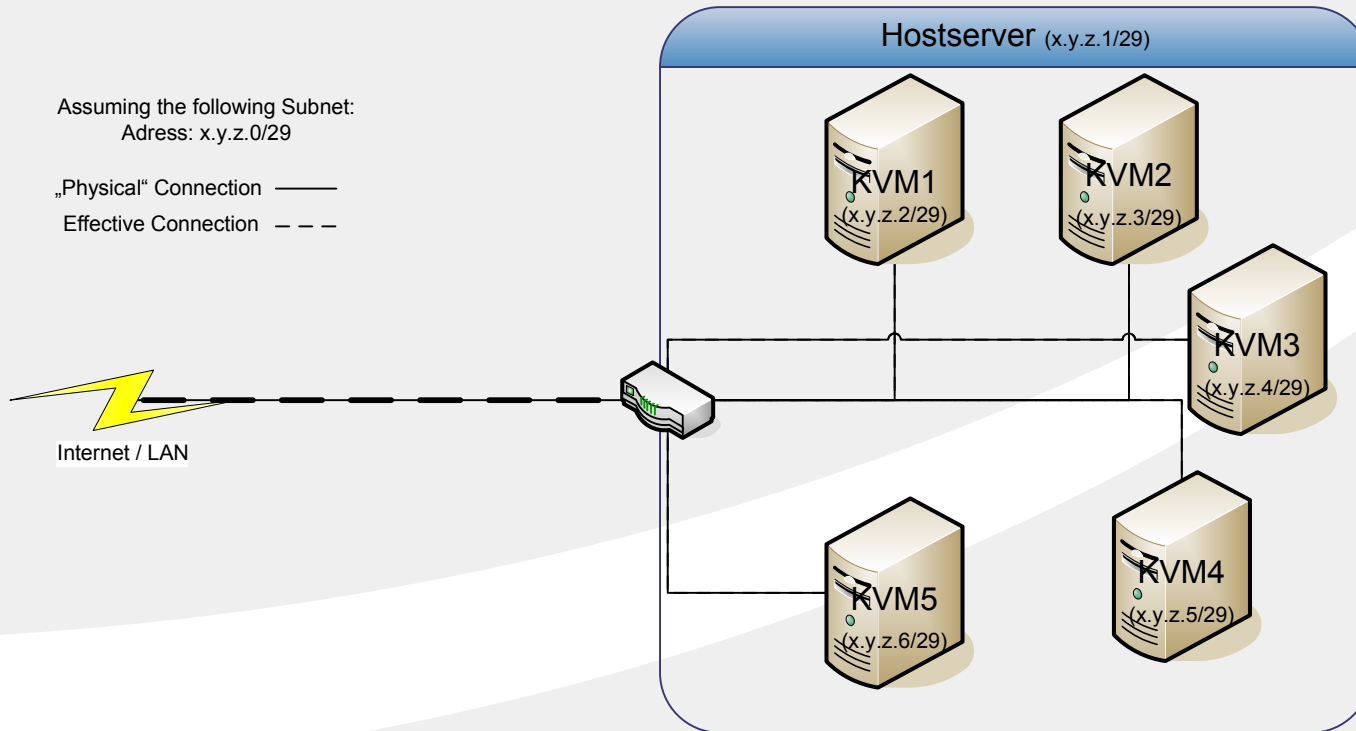
1. Hop: Own IP
2. Hop: ISP IP
3. Hop: RZ-Backbone IP
4. Hop: RZ-Router IP
5. Hop: Server's IP

Many Server-ISPs don't allow this type of communication (at least with subnets)

Routed Setup

Assuming the following Subnet:
Address: x.y.z.0/29

„Physical“ Connection ———
Effective Connection - - -



Routed access to internet/LAN via HostMAC adress

Trace Route to Server would look like this:

1. Hop: Own IP
2. Hop: ISP IP
3. Hop: RZ-Backbone IP
4. Hop: RZ-Router IP
- 6. Hop: Hostserver's IP**
5. Hop: Server's IP

Most ISPs will be okay with this setup.

Advantages:

- Central Firewall-Solution for all vServers possible!
- No need for internal Traffic to go over the NIC (more bandwidth for real customers)
- No broadcast storms over the edge of your subnet